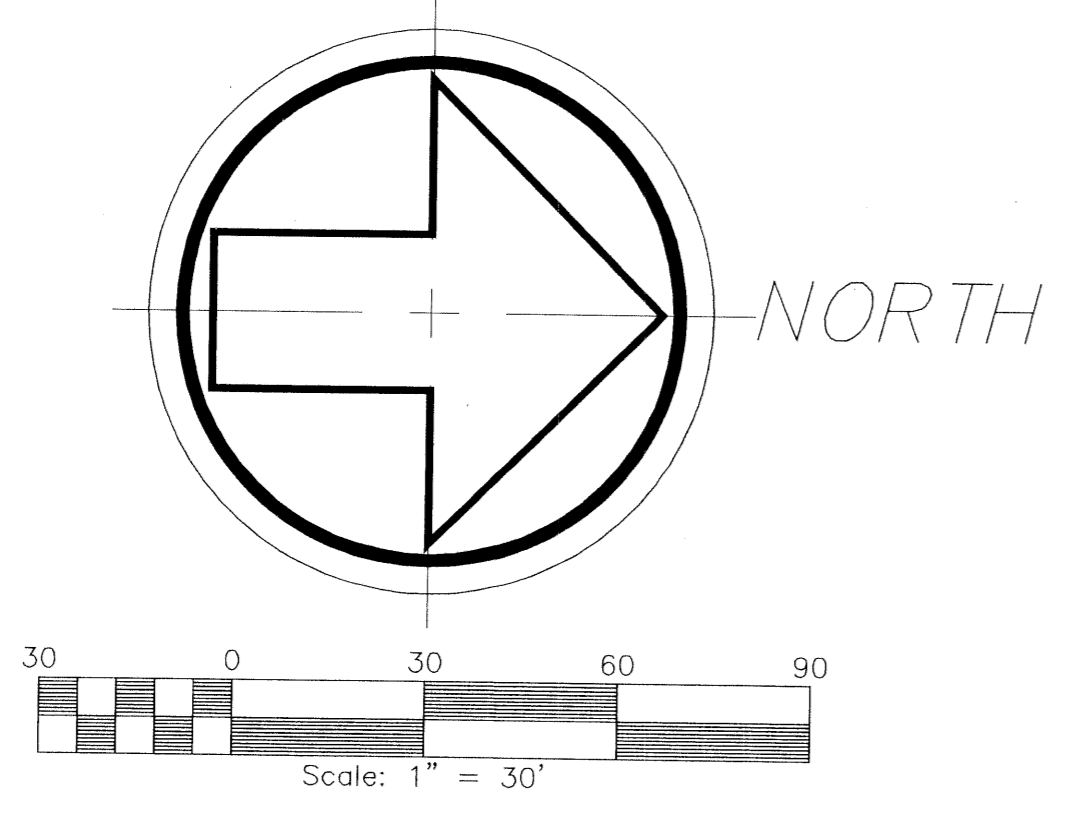


# THE MERIDIAN REPLAT

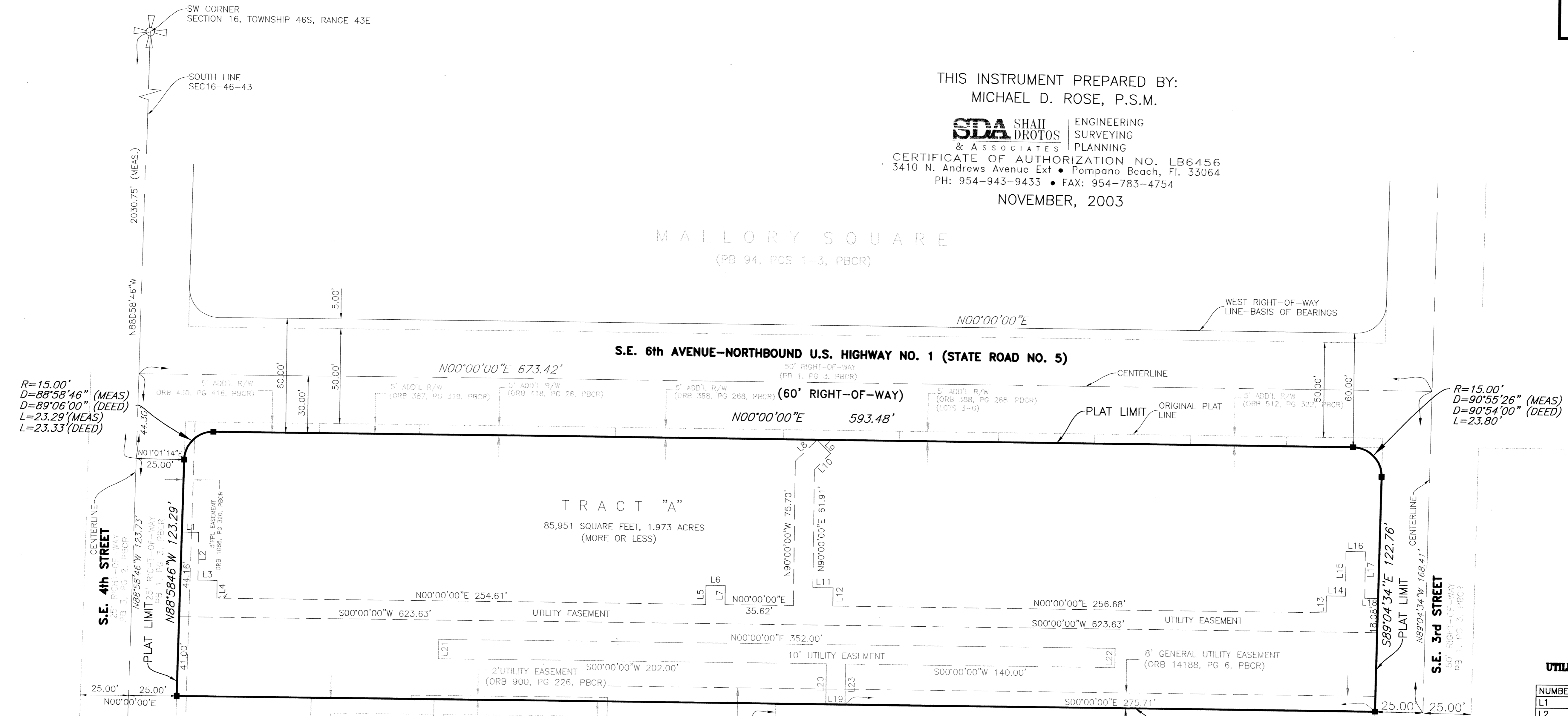
A REPLAT OF THE MERIDIAN, ACCORDING TO THE PLAT THEREOF  
 RECORDED IN PLAT BOOK 98, PAGES 92 THROUGH 93 OF THE PUBLIC  
 RECORDS OF PALM BEACH COUNTY, FLORIDA  
 IN FRACTIONAL SECTION 16, TOWNSHIP 46 SOUTH, RANGE 43 EAST  
 CITY OF DELRAY BEACH, PALM BEACH COUNTY, FLORIDA

107

STATE OF FLORIDA  
 COUNTY OF PALM BEACH SS  
 This Plat was filed for record  
 at \_\_\_\_\_ M., this \_\_\_\_\_ day  
 of \_\_\_\_\_, 200\_\_\_\_ and duly  
 recorded in Plat Book No. \_\_\_\_\_  
 on Pages \_\_\_\_\_ and \_\_\_\_\_  
 DOROTHY H. WILKEN, CLERK  
 BY: \_\_\_\_\_ DC

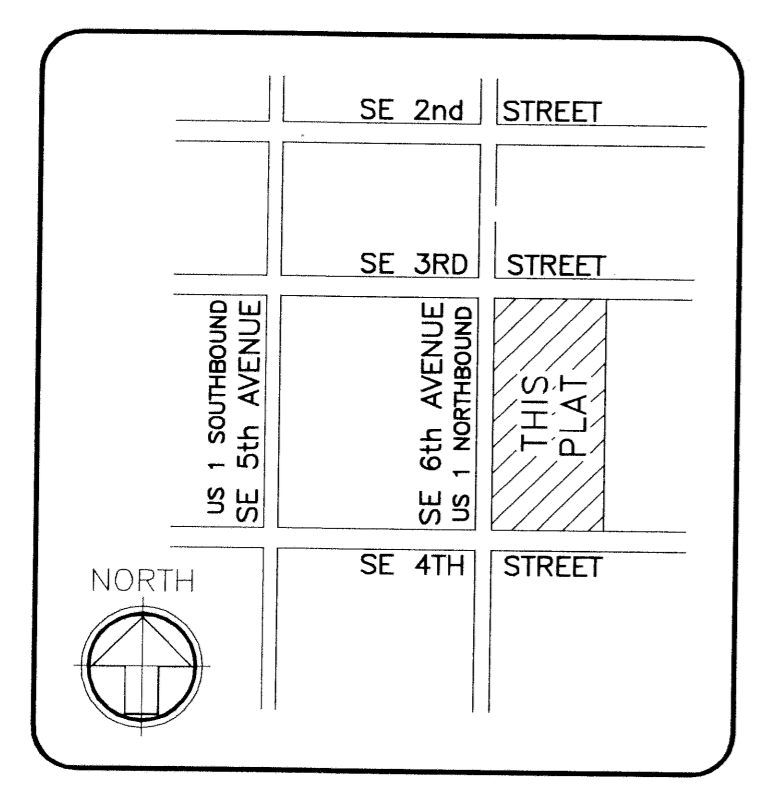


THIS INSTRUMENT PREPARED BY:  
 MICHAEL D. ROSE, P.S.M.  
**SDA SHAH** ENGINEERING  
**& DROTOS** SURVEYING  
 & ASSOCIATES PLANNING  
 CERTIFICATE OF AUTHORIZATION NO. LB6456  
 3410 N. Andrews Avenue Ext • Pompano Beach, FL 33064  
 PH: 954-943-9433 • FAX: 954-783-4754  
 NOVEMBER, 2003



UTILITY EASEMENT LINE TABLE

NUMBER	DIRECTION	DISTANCE
L1	N00°00'09"W	8.70'
L2	N90°00'00"E	24.80'
L3	N00°00'00"E	10.00'
L4	N90°00'00"E	9.35'
L5	N90°00'00"W	10.06'
L6	N00°00'09"W	10.00'
L7	N90°00'00"E	10.06'
L8	N45°07'31"W	15.95'
L9	N44°52'29"E	10.00'
L10	S45°07'31"E	11.83'
L11	N00°00'09"W	10.55'
L12	N90°00'00"E	9.66'
L13	N90°00'00"W	8.93'
L14	N00°00'00"E	10.00'
L15	N90°00'00"W	23.41'
L16	N00°00'00"E	10.00'
L17	N90°00'00"E	24.26'
L18	N00°00'00"E	6.97'
L19	S00°00'09"E	10.00'
L20	N90°00'00"W	20.99'
L21	N90°00'00"W	10.00'
L22	N90°00'00"E	10.00'
L23	N90°00'00"E	20.99'



LOCATION MAP  
 NOT TO SCALE